



Crown Field Support Engineering

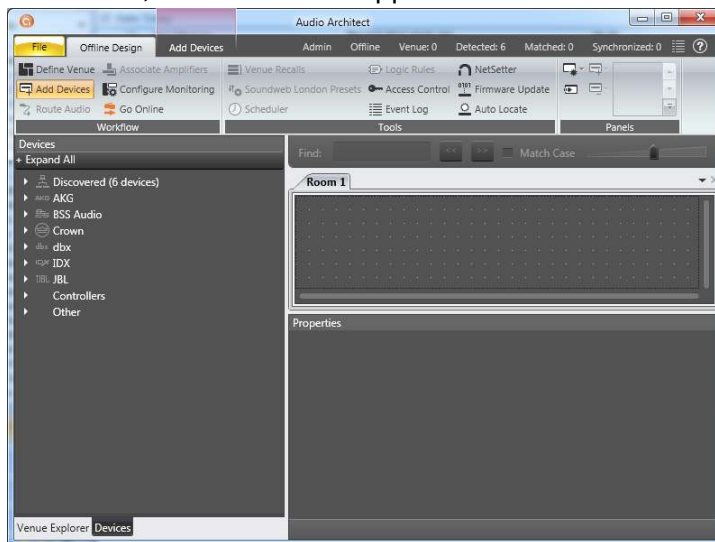
Issue Date: 15 May 2014

Ref. No: STB USB Communication #0002

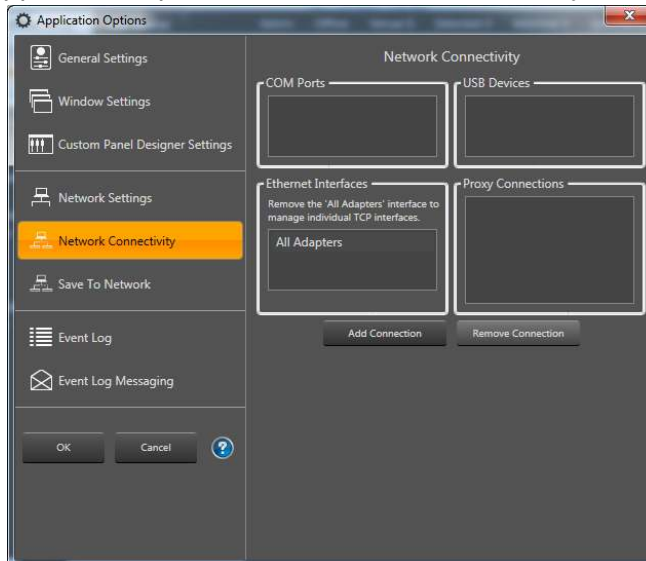
Subject: CDi, DSi. XTi Audio Architect not finding USB

Applicability: The following set of instructions will show you how to add USB connections in Audio Architect if the software does not find your USB controlled amplifier.

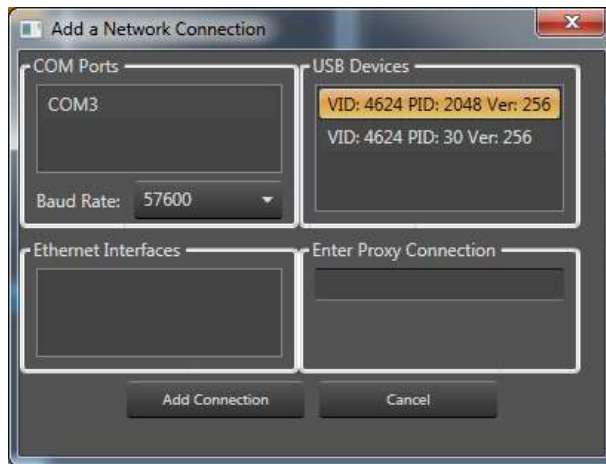
Step 1: In Audio Architect, click File in the upper left corner



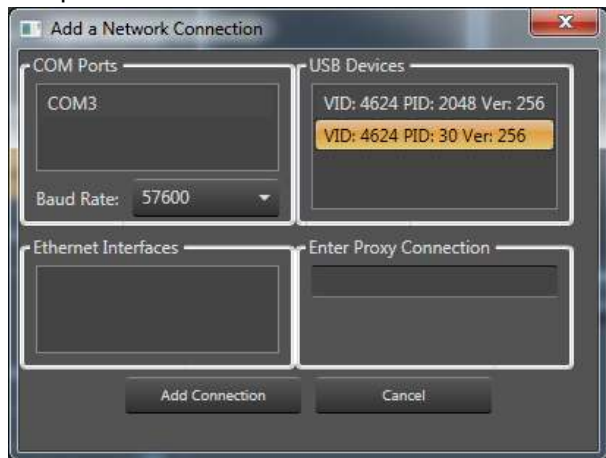
Step 2: Click Application Options then Network Connectivity



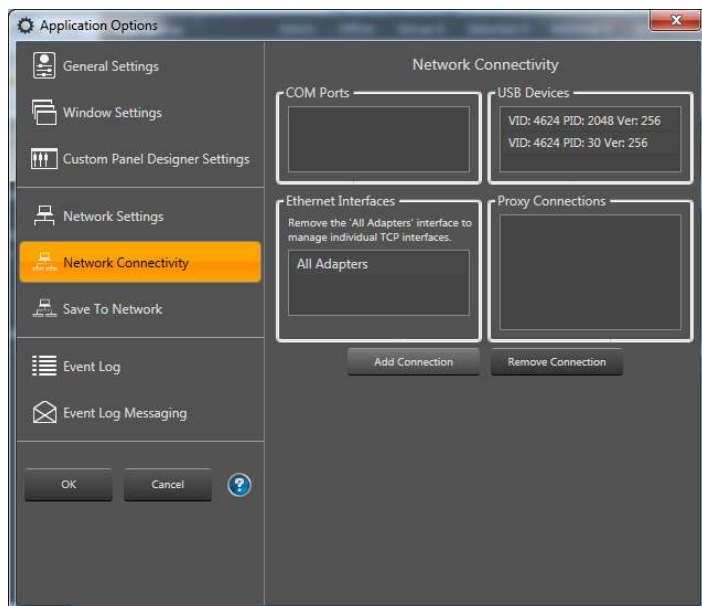
Step 3: Click on Add Connection. A smaller window will appear. Select the top USB Device listed and press Add Connection.



Step 4: Repeat Step 3 for second USB Device



Step 5: Two USB Devices should now be listed in the Network Connectivity box



Step 6: Click OK to exit Network settings. After a few seconds, you devices should show up as discovered devices in the Device window.

